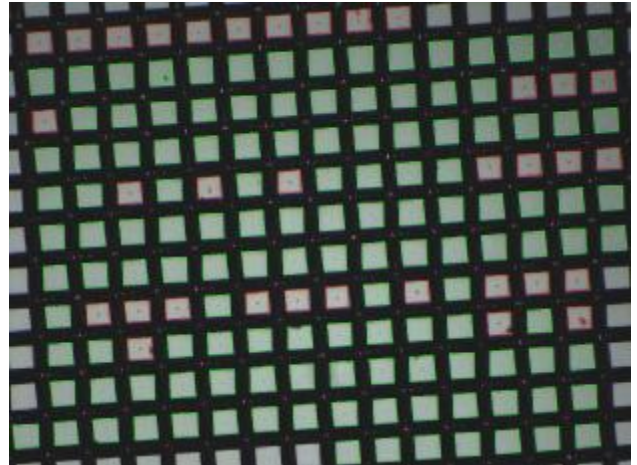


Measurement parameter:

Quantity of analyzed pictures: 3
Quantity of analyzed mesh-openings: 492 100,0%
Quantity of mesh-openings within the tolerance: 390 (79,3%)
Quantity of mesh-openings below the tolerance: 102 (20,7%)
Quantity of mesh-openings above the tolerance: 0 (0,0%)

Measure unit (micron)	Mean value	Standard type	Min	Max
Thread-Ø warp	42,1	0,2	41,6	44,2
Thread-Ø weft	41,2	0,3	40,6	44,5
Mesh opening warp	64,2	1,0	62,0	66,6
Mesh opening weft	62,8	3,8	56,5	69,4
Thread angle	89,9	0,6	89,9	89,9

Mesh count warp (1/cm): 94,0
Mesh count weft (1/cm): 96,2
Open area: 35,2%



Fabric number TEST	Range of fabrics TEST	State TEST		
Colour TEST		Remarks TEST		
Check tool CIL-3x	Examiner Peter Müller	Piece number TEST	Signature	

1. Measurement

Whole measure area (thread + opening width)	1814044,8 micron² (= 100,0%)	_____
Open areas thereof (mesh opening: green/blue/red)	638316,7 micron² (= 35,2%)	_____
Mesh opening out of tolerance (red/ blue) referenced to the whole area	120444,3 micron² (= 6,6%)	_____
Mesh opening out of tolerance (red/ blue) referenced to the open area	120444,3 micron² (= 18,9%)	_____
Thread diameter warp	42,1 micron +/- 0,2 micron	_____
Thread diameter weft	41,2 micron +/- 0,3 micron	_____
Mesh opening warp	64,2 micron +/- 1,0 micron	_____
Mesh opening weft	62,8 micron +/- 3,8 micron	_____
Mesh Angle	89,9° +/- 0,6°	_____

2. Measurement

Whole measure area (thread + opening width)	1814044,8 micron² (= 100,0%)	_____
Open areas thereof (mesh opening: green/blue/red)	638316,7 micron² (= 35,2%)	_____
Mesh opening out of tolerance (red/ blue) referenced to the whole area	120444,3 micron² (= 6,6%)	_____
Mesh opening out of tolerance (red/ blue) referenced to the open area	120444,3 micron² (= 18,9%)	_____
Thread diameter warp	42,1 micron +/- 0,2 micron	_____
Thread diameter weft	41,2 micron +/- 0,3 micron	_____
Mesh opening warp	64,2 micron +/- 1,0 micron	_____
Mesh opening weft	62,8 micron +/- 3,8 micron	_____
Mesh Angle	89,9° +/- 0,6°	_____

3. Measurement

Whole measure area (thread + opening width)	1814044,8 micron² (= 100,0%)	_____
Open areas thereof (mesh opening: green/blue/red)	638316,7 micron² (= 35,2%)	_____
Mesh opening out of tolerance (red/ blue) referenced to the whole area	120444,3 micron² (= 6,6%)	_____
Mesh opening out of tolerance (red/ blue) referenced to the open area	120444,3 micron² (= 18,9%)	_____
Thread diameter warp	42,1 micron +/- 0,2 micron	_____
Thread diameter weft	41,2 micron +/- 0,3 micron	_____
Mesh opening warp	64,2 micron +/- 1,0 micron	_____
Mesh opening weft	62,8 micron +/- 3,8 micron	_____
Mesh Angle	89,9° +/- 0,6°	_____