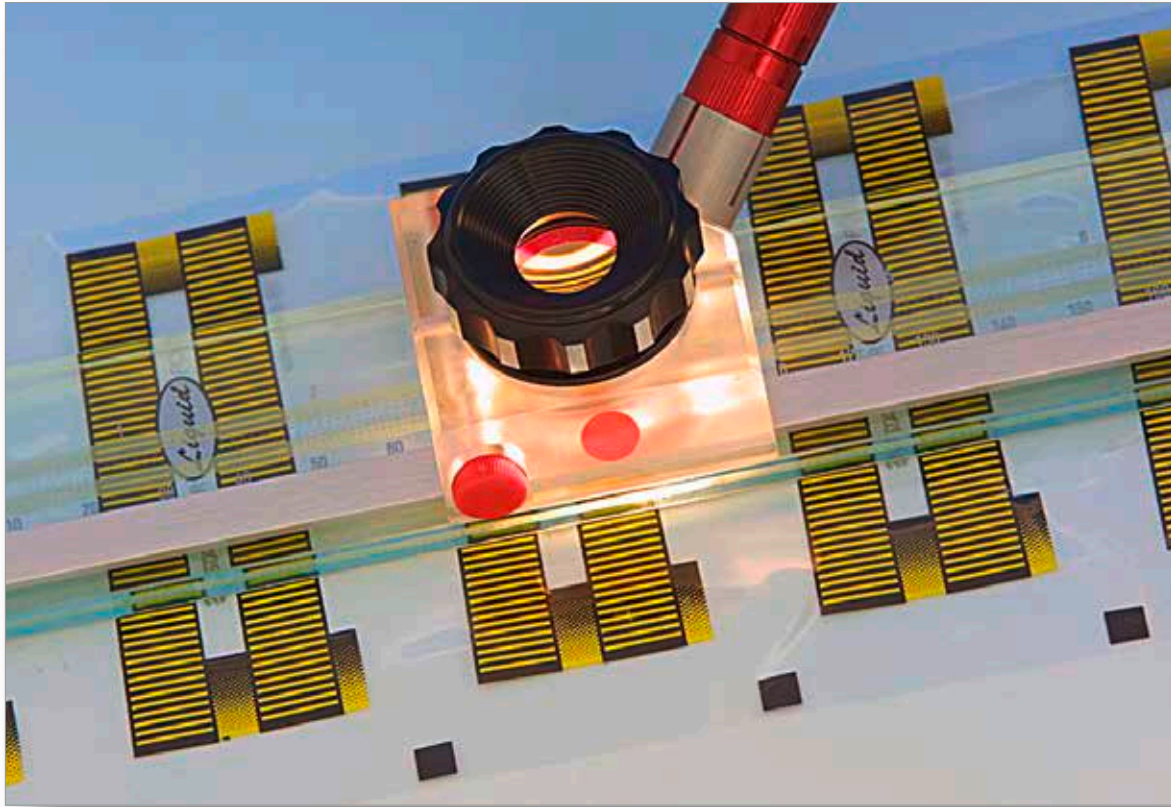


# CS glass measuring rods



## Table of contents

<i>The classic instrument for length measurement</i> .....	2
<i>Specifications</i> .....	2

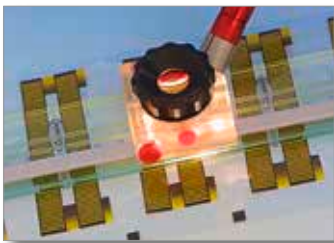
# CS glass measuring rods

## The classic instrument for length measurement



These precision glass measuring rods have graduations and numbers consisting of vapour-coated hard chrome. One scale each available in metric and inch increments. A white strip serves as a background on one side of the numbers to allow them to be read off more easily. The chrome scales are equipped with two anodised grips on the sides for secure handling. The precision magnifiers (type 2016 with 15x magnification factors and 12 millimetre field of vision) in combination with the two lights, ensure simple, error-free read-off of the scale. The smallest increment on the inch scale is 0.005". The minimum increments

on the metric scale are 0.1 millimetre. A further increase in the read-off accuracy is possible with the chrome micro-scale. Here an adapted analogue or digital dial gauge allows measurement of the distance between the one-tenth graduations. This allows precise measurements right down to one one-hundredth of a millimetre.



These valuable precision glass measuring rods are delivered in a stable wooden case to protect them from damage. These chrome scale rods are available in lengths of 300, 500, 800, 1000, 1400, 1600 and 2000 millimetres. Special lengths available on request. These glass measuring rods have the advantage that their expansion is minimal when heated. Temperature variations therefore have hardly any effect when using chrome scale rods.

### Specifications

- Upper measuring scale: Increments = 0.005" labelling (small) 0 .05 .10 ... (inches) labelling (large) 0 1.0 2.0 ... (inches)
- Lower measuring scale: Increments = 0.1 mm labelling (small) 0 .1 .2 ... (mm) labelling (large) 0 10 20 ... (mm)
- The graduations and numbers are vapour-coated with hard chrome on the glass rods are high resolution and absolutely scratch resistant. The graduations have a thickness of 0.010 mm
- The white strips facilitate reading in dark areas.
- Increment accuracy in compliance with DIN 864:  
 $\pm (0.003 \text{ mm} + 3L / 1'000'000)$   
Example: L = 500 mm, graduation error  $\leq 0.0045 \text{ mm}$  (dimensions based on 20°C)
- Thermal coefficient of expansion:  $9 \times 10^{-6} / ^\circ\text{C}$ .
- Refraction index = 1.5195
- Material = float glass (selected)
- Scaling not centred / centred on glass element! (multiple use)
- Length of glass elements = nominal length in inches x 25.4 mm / inches + 49 mm
- Width of glass element = 39 mm
- Thickness of glass element = 6 mm
- Available in lengths of (measuring range on double scale):
  - 300 mm / 12" = overall length 353.8 mm ( $\pm 1 \text{ mm}$ )
  - 500 mm / 20" = overall length 557.0 mm ( $\pm 1 \text{ mm}$ )
  - 800 mm / 32" = overall length 861.8 mm ( $\pm 1 \text{ mm}$ )
  - 1,000 mm / 40" = overall length 1,065.0 mm ( $\pm 1 \text{ mm}$ )
  - 1,400 mm / 56" = overall length 1,471.4 mm ( $\pm 1 \text{ mm}$ )
  - 1,600 mm / 64" = overall length 1,674.6 mm ( $\pm 1 \text{ mm}$ )
  - 2,000 mm / 80" = overall length 2,081.0 mm ( $\pm 1 \text{ mm}$ )

[Back to table of contents](#)

Order no.	Description	Price excl. VAT.
<b>CS-300</b>	Chrome glass measuring rod with 0.1mm and 0.005" graduations, incl. box - 300 mm	2,090.00 €
<b>CS-500</b>	Chrome glass measuring rod with 0.1mm and 0.005" graduations, incl. box - 500 mm	2,350.00 €
<b>CS-800</b>	Chrome glass measuring rod with 0.1mm and 0.005" graduations, incl. box - 800 mm	3,300.00 €
<b>CS-1000</b>	Chrome glass measuring rod with 0.1mm and 0.005" graduations, incl. box - 1000 mm	4,050.00 €
<b>CS-1400</b>	Chrome glass measuring rod with 0.1mm and 0.005" graduations, incl. box - 1400 mm	5,290.00 €
<b>CS-1600</b>	Chrome glass measuring rod with 0.1mm and 0.005" graduations, incl. box - 1600 mm	6,220.00 €
<b>CS-2000</b>	Chrome glass measuring rod with 0.1mm and 0.005" graduations, incl. box - 2000 mm	8,150.00 €
<b>CSM-300</b>	Chrome glass measuring rod with 0.1mm and 0.005" graduations, incl. box - 300 mm and additional analogue dial gauge	2,500.00 €
<b>CSM-500</b>	Chrome glass measuring rod with 0.1mm and 0.005" graduations, incl. box - 500 mm and additional analogue dial gauge	2,900.00 €
<b>CSM-1000</b>	Chrome glass measuring rod with 0.1mm and 0.005" graduations, incl. box - 1000 mm and additional analogue dial gauge	4,850.00 €
Delivery:	Incl. packaging, freight charges see <a href="http://www.m-service.de">www.m-service.de</a> (CS-1400 – CS-2000 mm – Special packaging 200.00 €)	
Payment:	30 days, net	